

Room Specifications and Hire Prices 2009.

Argyll Room & Terrace

Light, ornate and elegant, with fine bow windows at each end and a west facing terrace overlooking Hyde Park with an ante room if needed. One of the finest spaces in London.

Room Style	Max. Capacity
Theatre Style	100
Boardroom	40
Cabaret	48
Classroom	60
U-Shaped	40
Dining	120
Dinner Dance	80
Receptions	200
Wedding Receptions	120
Barbecues	200

Room Sizes (Approx)
Argyll Room
61' x 21'8" = 1342 sq ft
18.8m x 6.6m = 124 sq m

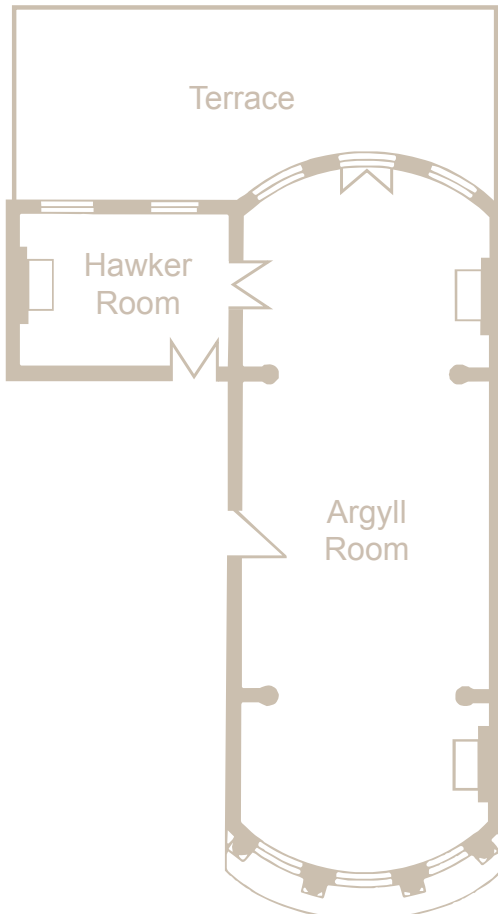
Hawker Room
13'6" x 17'10" = 1342 sq ft

Ceiling Height
15'10" / 4.9m

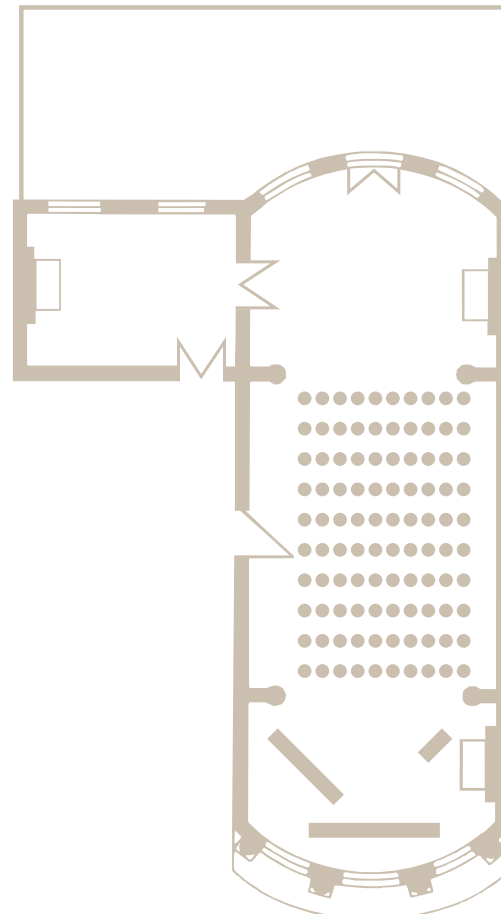
Room Hire Prices
Argyll and Hawker Room
1 Session £1700.00 + vat
2 Sessions £1800.00 + vat
Evening Session £1700.00 + vat

Exclusive Weekend Hire
(8 hour period) £3000.00 + vat

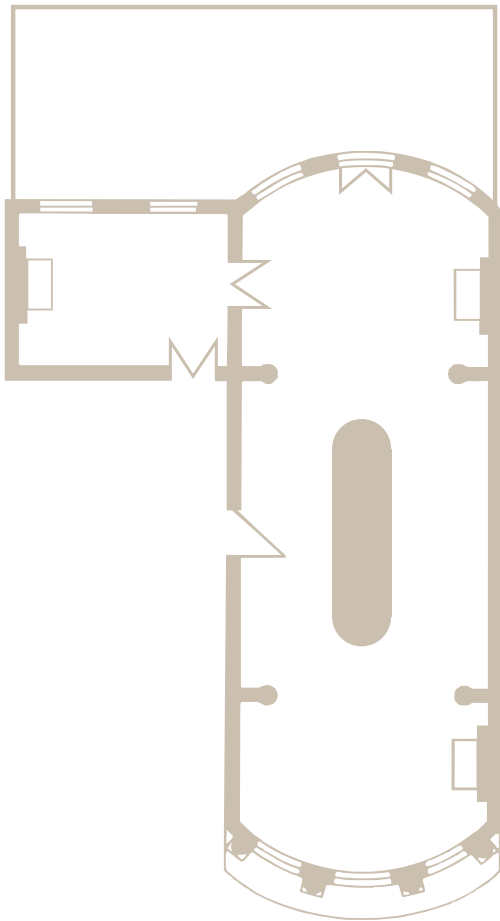
Room Plan



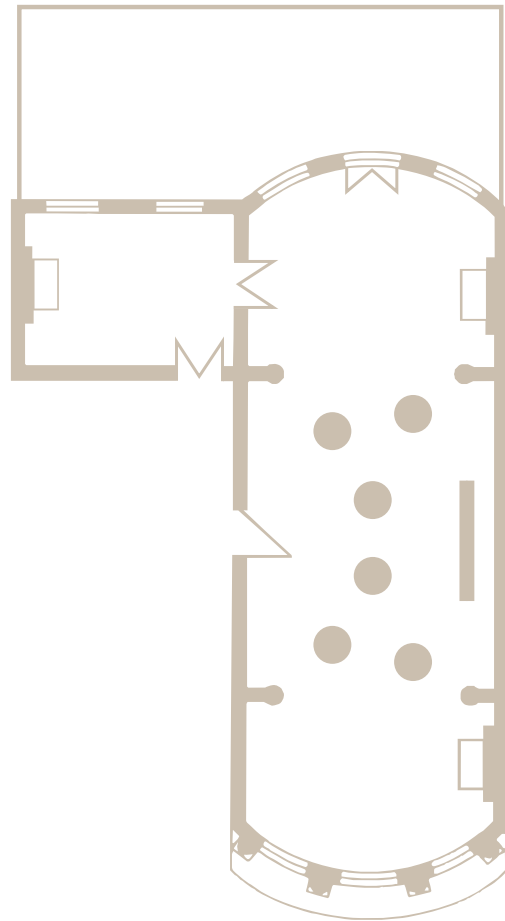
Theatre



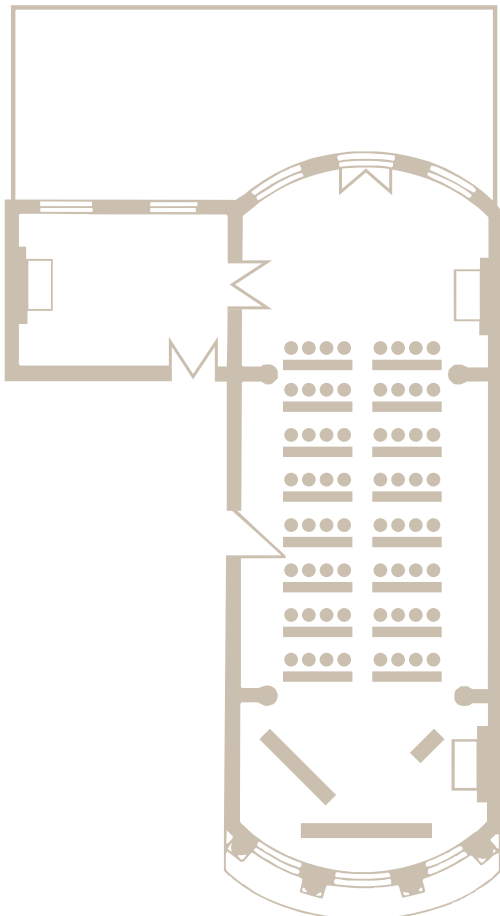
Boardroom



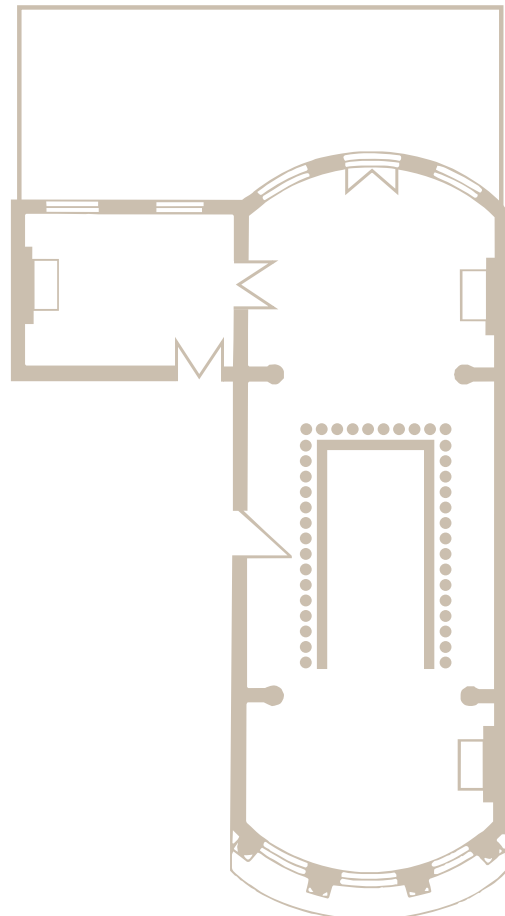
Cabaret



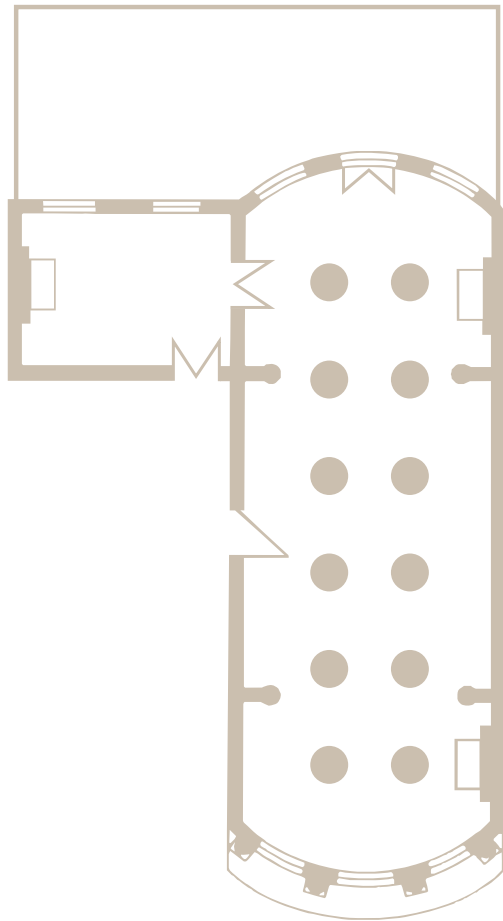
Classroom



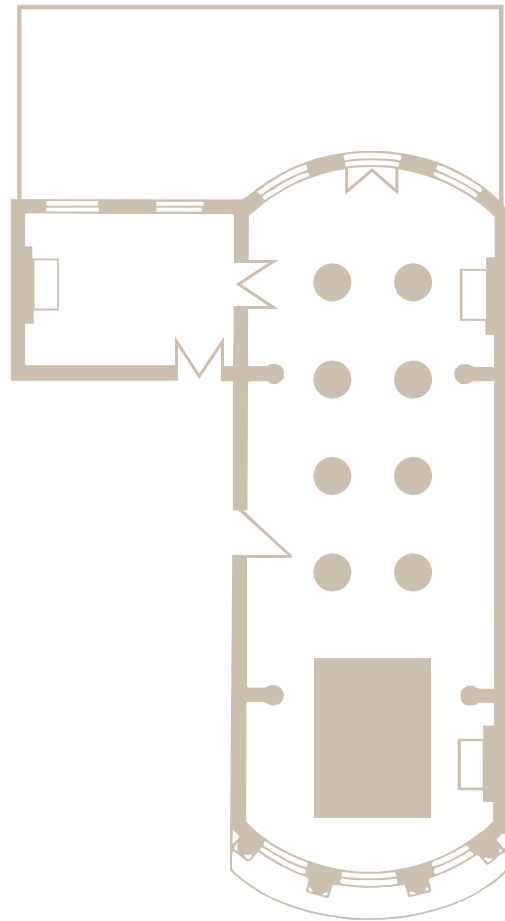
U-Shaped



Dining & Wedding Receptions



Dinner Dance



Receptions & Barbecues

